

The logo features a stylized yellow 'C' with a snowflake icon inside its upper loop, followed by the text 'copper mountain Meetings' in a yellow sans-serif font.

copper mountain Meetings

Come as a group...





...leave as a team.

Welcome to Copper! We invite you to explore Copper's unique and inspiring venues, set in a pristine, welcoming, natural environment. While you may be at Copper for business, you will want to ensure you mix in a little pleasure. Copper is a mountain getaway with a collection of outdoor adventures to discover no matter the season.

Looking for a meeting space with a view? Just picture your Summer gathering in quaint and cozy Center Village where your afternoon break is a chairlift ride up to Solitude Station for some fresh mountain air. Enjoy Summertime traditions in our casual and comfortable community with music festivals, sporting events and mountain activities galore. Between winter meetings, ski or ride on our naturally divided terrain. Explore the 12's, Copper's new High Alpine Project with 1,000 skiable acres encompassing 3 towering peaks with elevations in excess of 12,000 feet or let loose at the newly renovated Woodward Copper Barn.

Thank you for your consideration. Come see for yourself what we mean when we say we're easily accessible, playful and less complicated!

Location	1
About Us	2
Conference Space Overview	3
Copper Conference Center	5
Copper Pavilion	7
Jack's at Copper One	9
Pine Rooms at Village Square	10
Copper Station	11
Technical Support	13
Environmental Stewardship and Sustainability	14
Catering and Banquets	15
Dining and Après	16
Lodging	17
Lodging Quality Levels	18
Center Village Lodging	19
East Village Lodging	21
West Village Lodging	22
Woodward Copper	23
Copper Creek Golf Course	24
Welcome to Summit County	26
Travel Services	27
Free Public Transportation	28



About Us

At Copper Mountain Resort, we are experts in providing all types of groups with meaningful, customized experiences. If you're looking to bring people together to explore new ideas, think strategically, create new memories or celebrate milestones, the highly professional seasoned vets on our Sales and Services teams can help align your goals with an elevated experience found only at Copper.

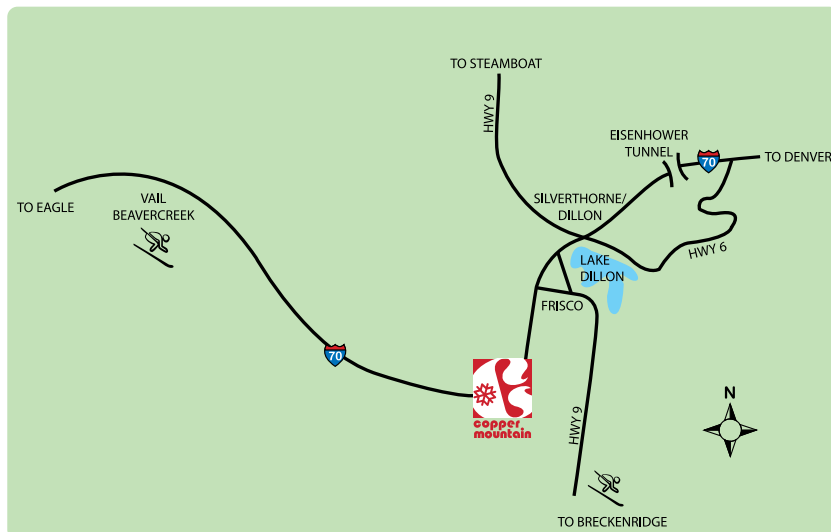
Copper's winter season runs from early November through late April. The summer season is from June through early September. Our services include.

- Lodging
- Meeting and Conference Facilities
- Food and Beverage Outlets
- All Ski/Snowboard Services
- Golf Course
- Summer activities around the village and on-mountain

Location

Copper is located in the perfect mountain setting, only 75 miles west of Denver on Interstate 70. Although we've made it hard to leave, we're incredibly easy to access. Located in Summit County's playground, Copper is surrounded by 50 miles of recreation pathway through the White River National Forest, Lake Dillon, The Top of the Rockies National Scenic and Historic Byway, The Town of Frisco, and much more. Served by three airports, Copper is a quick drive no matter where you're coming from.

- Denver International Airport is 90 mi/144 km east of Copper
- Eagle/Vail Country Airport is 61 mi/98 km west of Copper
- Colorado Springs Airport is 200 mi/ 320 km west of Copper



The Villages



You'll fall in love with Copper's welcoming, down-to-earth energy in its accessible and comfortable villages. Copper is only one mile long from East to West, but each of our three villages offer a different experience. Our naturally divided terrain gives each village its different character; we invite you to decide for yourself where you'll be most at home.

East Village

Home of the US Speed Center, East Village sits at the corner of play hard and train harder. Apartment style condos, townhomes, and upscale private homes provide easy access to advanced terrain on Super Bee—a high speed six passenger lift. Rustic dining, convenient retail options and Copper Creek Golf Course sit at the base of the mountain.

Center Village

Intimate, laid back and unpretentious, Center Village is a kaleidoscope of people watching and activities. Burning Stones Plaza, along with Colorado's 300 days of sunshine bathes everything in warmth. Surrounded by the Copper Mountain Conference Center and a diverse range of hospitality experiences, this Village is the heart of Copper.

West Village

Providing a coveted balance of action and calm, West Village is abuzz in the winter with Copper's Ski & Ride School and transforms by night into a tranquil pocket of casual alpine sophistication. Because of its easy access to family-friendly beginner terrain and base facilities, it's a prime residential destination.



At Copper you'll find outstanding conference facilities in the center of a breathtaking mountain setting. They're not tucked away on the fringes of the resort, but right in the middle of it. Copper offers all types of function space from large conference centers to smaller more personal board rooms or spectacular mountaintop wedding venues. Copper's stylized meeting venues allow you to mix leisure with learning.

Wherever you wish to host your gathering at our resort, a dedicated crew with years of experience will work diligently to create your signature event. Bring a few board members or the entire class of '72; our conference spaces can be customized to ensure sure your group has all the amenities you deserve. We focus on the details and anticipate your needs, so you never even have to ask.



Bighorn Ballroom



Bighorn Ballroom



Kokopelli's Trail



Hasty's



Kokopelli's Trail



Hasty's

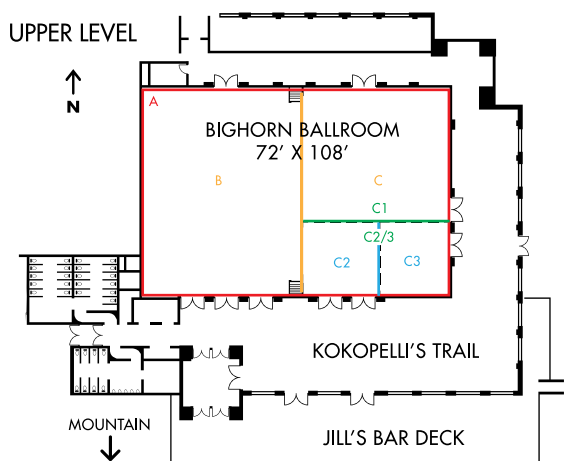
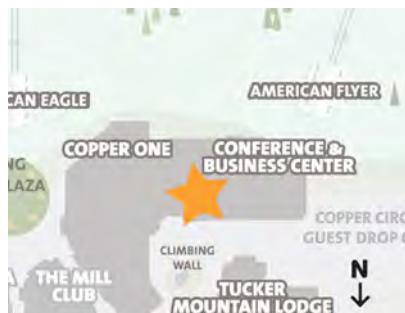


Bighorn Ballroom

Copper Conference Center

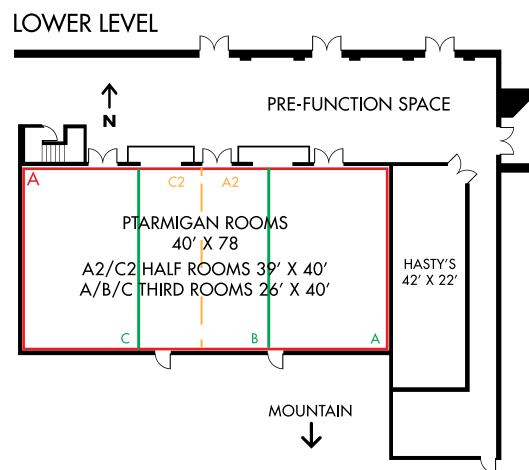
The Copper Conference Center is in the heart of Center Village. This flexible meeting space can be configured to match your needs from large ballrooms to intimate conference rooms. The best part is that all sized spaces come with slopeside views to enjoy during breaks.

- 15,568 ft² of dedicated meeting space
- Facilities to accommodate up to 740 people
- Adjacent slope-side deck for outdoor entertaining and dining
- Located at the base of American Eagle and American Flyer lifts, ski-in/ski-out



UPPER LEVEL CAPACITIES	SQUARE FT.	CLASSROOM	THEATRE	ROUNDS OF 10	HOLLOW SQ.	U-SHAPE	BOARD ROOM	RECEPTION
CEILING HEIGHT 18'								
BIGHORN A	7776	384	740	450	-	-	-	800
1/2 (B OR C)	3888	195	300	220	-	-	-	400
C1	2474	108	240	120	66	49	46	250
C2	707	707	54	50	34	25	26	75
C2&3	1237	1237	80	90	52		46	125
C3	533	533	28	30	24	20	20	50
KOKOPELLI'S TRAIL	2112	-	-	-	-	-	-	200

*JILL'S BAR DECK AVAILABLE FOR OUTDOOR FUNCTION SPACE



LOWER LEVEL CAPACITIES	SQUARE FEET	CEILING HEIGHT	CLASSROOM	THEATRE	ROUNDS OF 10	HOLLOW SQ.	U-SHAPE	BOARDROOM	RECEPTION
HASTY'S	1000	10'	39	68	60	46	33	36	105
PTARMIGAN	3120	12'	144	272	210	90	72	70	325
HALF	1560	12'	60	126	90	50	34	34	165
2/3	2091	12'	84	160	120	66	48	46	220
1/3	1029	12'	40	56	60	42	36	36	110

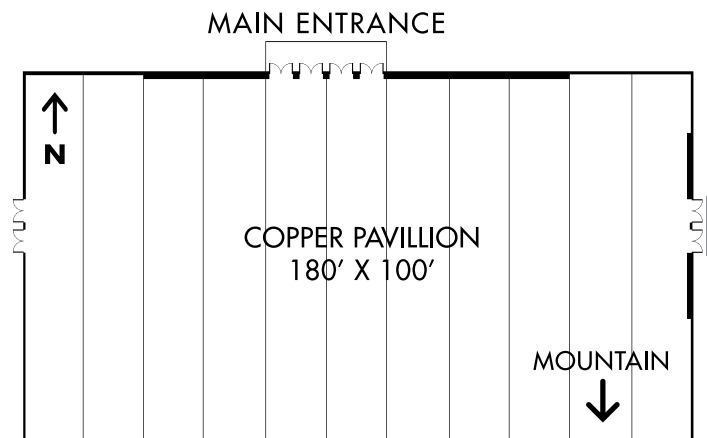
PRE-FUNCTION SPACE 1560 FT²



Copper Pavillion

Copper's Pavillion is available June - September and is 18,000 ft² of open, unobstructed space. It is ideal for your trade show, awards banquet, general session or concert. This spacious structure is located adjacent to the 16,000 ft² Copper Conference Center and Jack's, the 7,000 ft² bar/restaurant area in Copper One. Combined offerings are 41,000 ft² of prime function space in the heart of Center Village.

- Summer availability only
- 100' x 180' facility
- 28' ceiling height
- Hard wall structure with glass windows
- Sport Court floor surface for clean, sleek appearance and durability
- ADA compliant accessibility
- 8 sets of double doors
- Hi-Bay lights
- Can be heated or cooled
- Spectacular view of the Ten Mile Range



PAVILION CAPACITIES	SQUARE FT.	CLASSROOM	THEATRE	ROUNDS OF 10	HOLLOW SQ.	U - SHAPE	BOARD ROOM	RECEPTION	8X10 EXHIBITS
CEILING HEIGHT 34'									
PAVILION	18,000	800	1200	770	-	-	-	1500	105



Copper Pavillion



Copper Pavillion

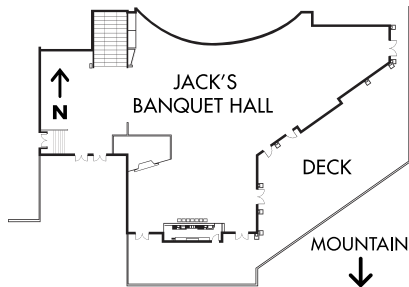
Jack's Banquet Hall



Jack's Banquet Hall

Copper One is a crowning example of high-alpine architecture. Located at the base of the ski hill in Center Village, Jack's provides a unique blend of classic mountain-side comfort and modern amenities.

- Conveniently connected to the Copper Conference Center
- Bar ideal for banquets, socials and après events
- Floor to ceiling windows overlooking the deck and mountain-side
- Available year-round (Food court in the winter and private function space in the summer)



Jack's Banquet Hall

JACK'S AT COPPER ONE CAPACITIES

6900	SQUARE FEET
10' - 12'	CEILING HEIGHT
320	SQUARES OF 8
1000	RECEPTION

Pine Rooms at Village Square

The Pine Rooms at Village Square provide privacy and flexibility for groups up to 280. A flexible floorplan consisting of three meeting rooms adapts easily to your specific needs.

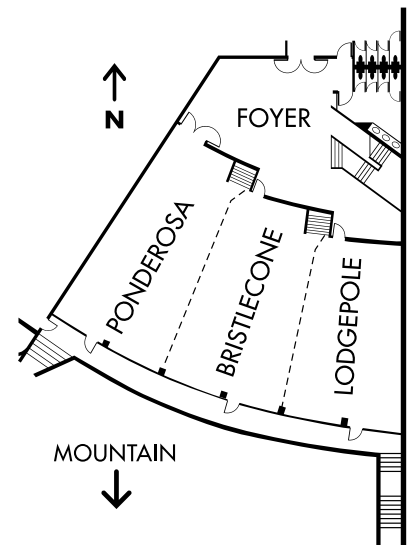
- Located in Center Village
- Steps away from lodging and resort activities
- Featuring 3,500 ft² of dedicated meeting/function space
- Windows provide nourishing natural light, or can be blacked out for a theater vibe



PINE ROOMS AT VILLAGE SQUARE



Ponderosa

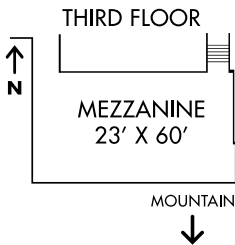
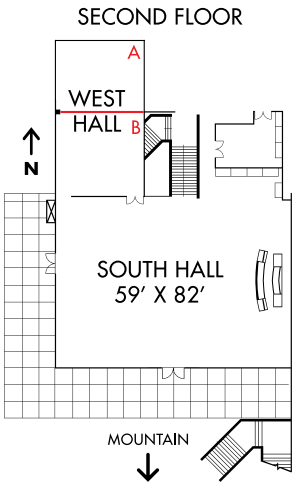
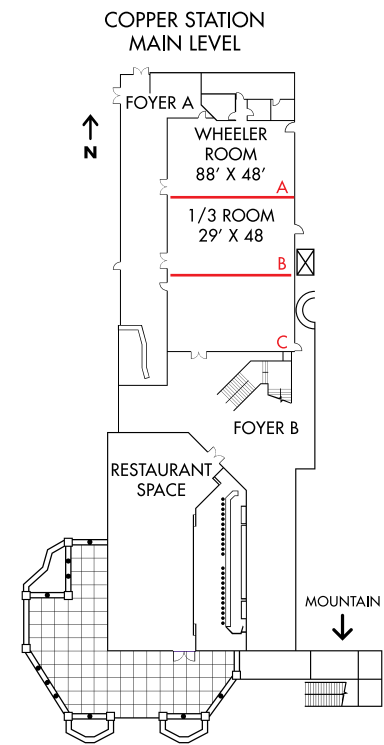


PINE ROOM CAPACITIES	SQUARE FEET	CLASSROOM	THEATRE	ROUNDS OF 10	HOLLOW SQ.	U - SHAPE	BOARD ROOM	RECEPTION
FULL PINE ROOM	3500	160	280	220	76	48	60	370
LODGEPOLE/ BRISTLECONE	2250	80	160	110	52	42	38	230
BRISTLECONE/ PONDEROSA	2450	80	183	150	54	42	38	255
LODGEPOLE	1050	40	70	60	42	24	34	110
BRISTLECONE	1200	40	73	70	42	33	36	125
PONDEROSA	1250	46	45	70	42	39	36	130

* FOYER 1,000 FT²

In picturesque East Village, Copper Station has two floors of flexible function space for your gathering. Featuring a full service restaurant, JJ's and a large open space, Grand Hall each area has views of the Super Bee, golf course and Sky Chutes.

- 40,000 ft² of naturally lit banquet hall
- 18,750 ft² of meeting space
- 3 level facility including outdoor viewing decks
- Floor to ceiling windows providing ample light and jaw-dropping views



MAIN FLOOR CAPACITIES	SQUARE FEET	CLASSROOM	THEATRE	ROUNDS OF 8	HOLLOW SQ.	U - SHAPE	BOARD ROOM	RECEPTION
WHEELER ROOMS	4365	180	400	240	-	-	-	435
2/3	2910	124	254	152	84	58	50	305
1/3	1455	56	90	64	56	44	42	155
FOYER A	1520	-	-	-	-	-	-	145
FOYER B	2288	-	-	-	-	-	-	220
TAVERN	3000	-	-	-	-	-	-	200

UPPPER FLOOR CAPACITIES	SQUARE FEET	CLASSROOM	THEATRE	ROUNDS OF 8	HOLLOW SQ.	U - SHAPE	BOARD ROOM	RECEPTION
CEILING HEIGHT 12' 36' IN SOUTH HALL								
SOUTH HALL	4838	-	-	160	-	-	-	485
WEST HALL	1860	72	155	120	72	53	52	435
W. HALL A/B	930	32	60	48	40	28	28	-
MEZZANINE	2400	72	187	128	72	52	54	255
OUTER DECK	3170	-	-	-	-	-	200	300

* PATIO SPACE AVAILABLE FOR FUNCTIONS



The location is one thing, but our people are what really set us apart. Each member of our staff has made a decision to embrace the mountain lifestyle in everything they do and it is their pleasure to share that insider knowledge with you and your group. We're happy to let you know where the best place for a sunset photo is, the most likely spot to peep some mountain wildlife or our trick for getting a birdie on hole #9. We take pride in making sure that your event is the best that it can be and that each one of your guests has an experience that only our part of the Rocky Mountains can deliver.



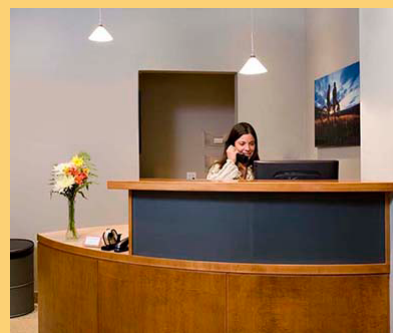
Need the latest technology? Copper offers an array of different options for AV equipment and IT support including but not limited to:

In-House AV

- Video conferencing
- Standard and HD projectors
- High-brightness data projection
- TV/DVDs
- Large LCD displays
- Video production
- Color and laser printing
- Audio mixers up to 32 channels

IT Support

- Telephone service
- Data service
- Power service
- Wi-Fi Access



Copper's Business Center

The Business Center at Copper Mountain welcomes the opportunity to assist you in preparation for your conference or leisure activities. Conveniently, located in the lower level of the Conference Center, the Business Center provides walk-in and special order services for all of your printing, laminating and document creation needs.

P: 970.968.2318 x47880 F: 970.968.3164
BusinessCenter@CopperColorado.com

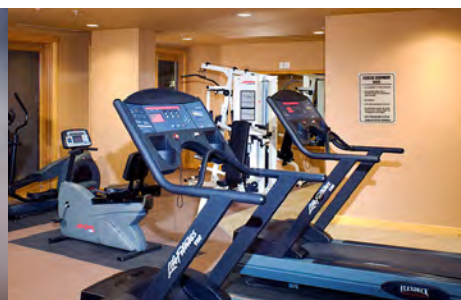
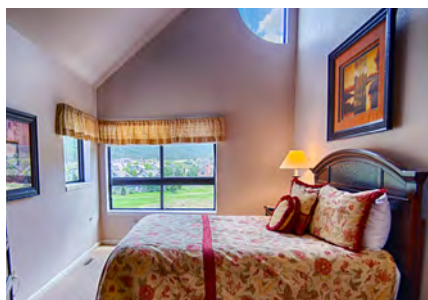
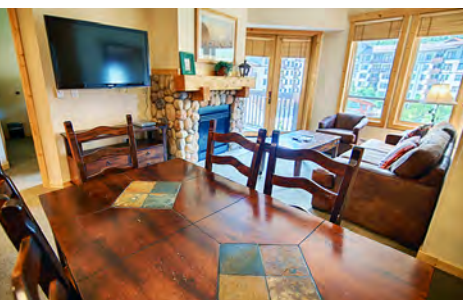


We know that when inspiring settings and authentic service converge with natural elements, something magical happens. We believe that satisfying healthy appetites with great food is an important detail in developing an atmosphere that energizes your group. That's why our chefs pride themselves on presenting tastes from around the world and satisfying the most discriminating culinary adventurer. Every event, regardless of size, is served five-star cuisine made from scratch right here.



Copper's villages host a numerous full service restaurants, providing a variety of choices when it comes to dining out and if your crew is looking to unwind after a long day, Après is a ski town tradition that is in full effect at Copper. Nothing beats good food and good company for creating great memories.

Copper's accommodations are steps from the mountain and conference facilities. At most you're a five minute walk and we provide easy transportation between villages if you're in a rush. There are rooms to fit any size group and any budget. Comfortable, spacious yet cozy rooms in buildings made from heavy stone and timber create the iconic mountain atmosphere you come here for. Whatever your preference, we'll make you feel right at home.



Platinum: Stay in the best of the best. Spoil yourself or your group with a five star condominium including a fully equipped kitchen, private bedroom and bath, private balcony, gas fireplace, outdoor pools/hot tubs, workout facility, free parking, free Wi-Fi, free shuttle and incredible proximity to the lifts - only 150 yards away!

Gold: Comfortable 1, 2 and 3 bedroom condos, hotel-style rooms and studios will keep you and your group happy while you enjoy all the mountain has to offer. Enjoy free Wi-Fi, free parking, a fully equipped kitchen, gas fireplace, private balcony and nearby shopping and restaurants. Most gold buildings also have a hot tub so you can rest and rejuvenate after a long day.

Silver: Hotel-style rooms, studios and 1-5 bedroom condos complete with Wi-Fi and parking are Copper's best value and most frequently requested rooms. Perfect for a family vacation, reunion or business retreat.

Bronze: Copper's most economical options with close proximity to the mountain. Parking at or near your building, Wi-Fi, and always close to shopping and restaurants.

The small and friendly, pedestrian-only village is Copper's central meeting place. As you walk around, your senses will be delighted with the sights and sounds of our most social village. Walk out the door in your ski boots and be right on the mountain. You will be steps away from the majority of Copper's event action as well as restaurants, shopping and the Copper Conference Center. Here's a breakdown of our Center Village lodging by level, neighborhood and building:

Gold Level

Covered Bridge

- Taylor's Crossing
- Tucker Mountain

Passage Point

- Passage Point

Burning Stones

- Mill Club
- Copper One

Silver Level

Mountain Plaza

- Mountain Plaza

Creekside

- Bridge End
- West Lake

Silver Level Cont'd

Village Square

- Village Square

American

- Spruce
- Copper Mountain Inn
- Lodge at Copper

Bronze Level

Ten Mile

- Timber Creek
- Ten Mile Haus
- Summit House
- Copper Valley



Passage Point



Find yourself in a quiet, self-contained village with a few quaint restaurants and shops. Home of the Tubing Hill, U.S. Ski Team Speed Center and Copper Creek Golf Course, there is plenty to keep you occupied in your down time. Here's a breakdown of our East Village lodging by level, neighborhood and building:

Gold Level

Copper Springs

- Copper Springs

Fairway

- Woods
- Elk Run

Silver Level

Wheeler

- Foxpine
- Wheeler House
- Greens



The village that hosts Copper's Ski and Ride Schoolhouse in the winter, this is a great place for beginner skiers and riders. During the summer, West Village is a quiet retreat for someone looking to take in the views of the valley and enjoy the serenity away from the crowds. Here's a breakdown of our West Village lodging by level, neighborhood and building:

Platinum Level

The Cirque

- The Cirque

Gold Level

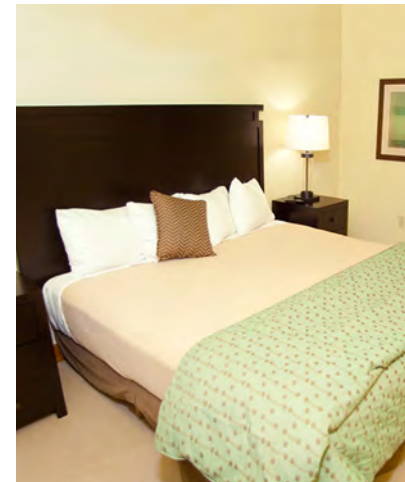
The Cache

- The Cache

Silver Level

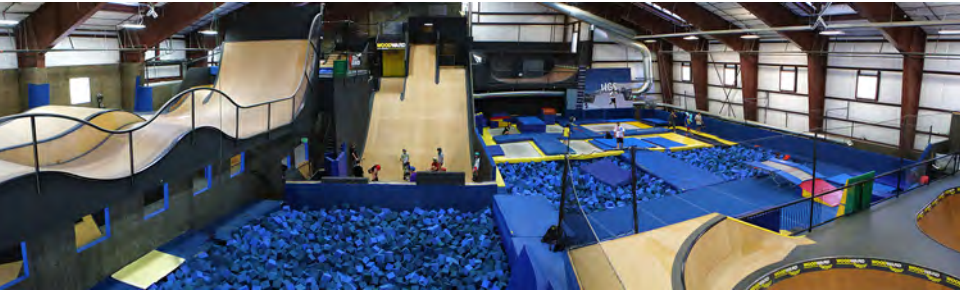
Telemark Lodge

- Telemark Lodge





Want to host a unique gathering for your group? The Barn at Woodward Copper is a 19,400 ft² training facility with programs focusing on ski, snowboard, skate, BMX and digital media, to name a few. It's alright if you're not looking to get that involved. The Barn is also a great space to host a team building meeting, small concert or gala. With several viewing decks and AV capabilities there is ample space for almost any event you have in mind. Team building programs can be customized according to your needs.



If you're looking for the perfect way to enhance your summer group outing in the beautiful Rocky Mountains, Copper Creek Golf Course can help. Spell binding views of the Ten Mile Range makes even the greenest golfer feel like they're getting the "pro treatment." At 9,700 ft, our course presents a mix of links and mountain styles designed by the venerable Pete and Perry Dye. Copper Creek is the highest 18-hole golf course in North America.

Want to host your own tournament? The professionally trained staff at Copper Creek is ready to assist you in planning a successful event from registration to post-play celebration. Book a group lunch or après open-bar through your conference coordinator.



COPPER CREEK



Additional available services:

- Dedicated tournament coordinator
- Golf carts
- Award presentations
- Food and beverage packages
- Group clinics
- Prize packages



Summit County is a mecca of summer and winter activities. We promise you'll never run out of entertainment. Copper is known for being the "locals' mountain" and we are proud to share that feeling with you and yours, wherever you come from.

Summer in Summit County is nothing short of awe-inspiring. Not only are you nestled into a beautiful valley, but 300 days of sunshine per year make it possible for you to enjoy a slew of mountain hobbies. Within six miles of Copper you can go shopping on quaint Main Street, go horseback riding, hiking, fishing, road and mountain biking, sailing or rafting. Or compete in a "Gold Triathlon" and play 18-hole golf, mini-golf and disc golf all in a day. Check out the Frisco Adventure Park with a BMX course, sports fields, disc golf course and access to camping on Lake Dillon. Where will your summer adventure take you?



Frisco Main St.



Copper Mountain



Lake Dillon



During the Winter months Summit County only gets more vibrant. As Frisco fills up with visiting winter sport enthusiasts, the town buzzes with the delight of fresh snow on our favorite runs. While you're in town check out locally owned shops and restaurants, a myriad of historical information, tubing hills, sleigh rides and sport rentals including cross country skiing, snowshoeing and snowmobiles.

How will you get here? There are so many options to fit your group needs. No matter how many people need transport, we make sure you're taken care of.

Summit Express

Summit Express is an affordable, convenient and safe ground transportation between Denver International Airport and Copper Mountain.

Car Rental

We can reserve a vehicle for you with Hertz or Budget rental companies for the duration of your stay. Have all the freedom you would if you were right at home with your own vehicle. Discounted rentals are available through our central reservations center. Please call 866.763.5956.



Resort Transportation

For your convenience, buses run throughout Copper Mountain Resort villages providing reliable transport to our ski villages, shops, restaurants or meeting spaces.

Copper Coach is a dedicated on-call shuttle with space for up to 14 people. For hours or to schedule a shuttle, call 970.368.2002.

The Summit Stage

The Summit Stage is a FREE local bus servicing all of Summit County daily. Major stops include Copper Mountain, Breckenridge, Dillon, Frisco, Keystone, Silverthorne and Leadville.



Copper Mountain is committed to and respects the environment in which we live, work and play. We take pride in our role as a steward of our beautiful surroundings, ensuring this special place remains so for future generations to enjoy. Some of our "green" commitments include:

- Highly efficient bottle re-filling stations around the resort in the quest to be plastic bottle free
- Solar panels at Solitude Station and the Transportation Center to help capture energy from our 300 days of sunshine each year
- Waste reduction through the use of plates and cutlery rather than paper or plastic options and bulk food offerings to omit access packaging
- Energy conservation in lodging by allowing guests to decline laundry service and use of high efficiency light fixtures
- Organic food options for conference attendees

We also partner with several environmental organizations including:

- NSAA's Keep Winter Cool Campaign - supporting awareness and action on global warming
- NSAA's Sustainable Slopes Campaign - advocating ski area environmental stewardship
- U.S. Forest Service - mainly the local White River Forest Ranger District, as our strongest partner in a joint commitment to environmental excellence.
- High Country Conservation Center - a Summit County organization supporting recycling, green building, renewable energy and energy efficiency
- Member of the Green Meetings Industry Council



**Thank you for your interest in Copper Mountain -
we hope to see you soon!**

Opportunities: _____

To Learn: _____

To Create: _____

To Motivate: _____

To Change: _____

To begin working with our Sales Team to plan your next conference,
meeting, wedding or special event, please call or email:

Conferences and Meetings

970.968.2318 x11504

conferencesales@coppercolorado.com

CopperMeetings.com

Leisure Groups and Weddings

970.968.2318 x11505

gs@coppercolorado.com

CopperColorado.com/Groups

Special Events

970.968.2318 x45930

conferenceservices@coppercolorado.com

